

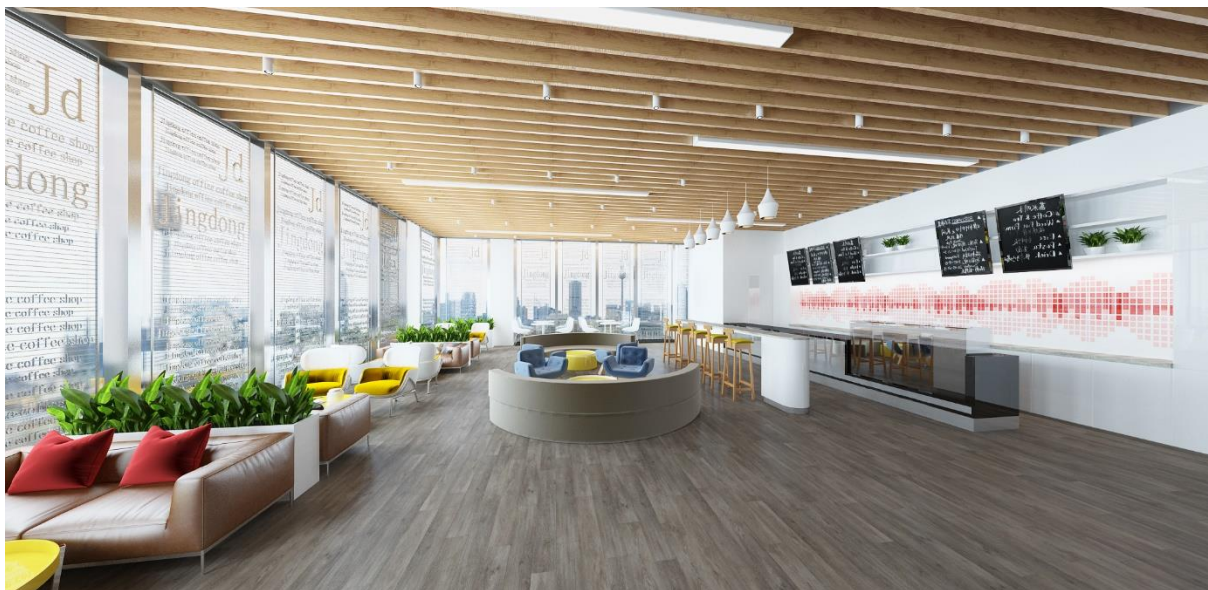


Impervia® Flooring
Unit 1 Helena Court, Hampton Street,
Tetbury, Gloucestershire GL8 8JN and The Building Centre, London WC1E 7BT
Tel: 01666 504015 Mobile: 07831 680206
Web: www.impervia.com Email: sales@ryderinternational.com

This document explains why **Impervia®** is the best option for flooring where natural engineered timber is considered too expensive or unsuitable. It is not vinyl or plastic (like Amtico and Karndean which use fossil fuels) and is VOC free. Technical details and comparison tables can be found further on in this document.

Architects and Designers:

Impervia® can be used anywhere in the home or office. We have used it in **canteens** as well as **retail** outlets. The image below shows one of our colour and finish ranges. The surface is textured and the production method we use, compared to others, is that this texture generally follows the grain, making the floor look and feel more like real wood. We can make designs to meet your requirements subject to lead times and quantity. The paper décor layer is available in virtually any colour and design but with **Impervia®** we prefer to follow the traditions of wood flooring, which has a clean contemporary look.



All you need to fit Impervia® is a flat subfloor with installation more economical than any other floor. There are contractors who will charge just £15.00 per m2 to fit **Impervia®**



INDUSTRY PARTNER

Ryder International Limited T/A Impervia® Flooring Reg. No 5288599 Registered Office: Unit 1 Helena Court, Hampton Street, Tetbury, Gloucestershire GL8 8JN VAT Registered No: 869 8398 36





Impervia® Flooring
Unit 1 Helena Court, Hampton Street,
Tetbury, Gloucestershire GL8 8JN and The Building Centre, London WC1E 7BT
Tel: 01666 504015 Mobile: 07831 680206
Web: www.impervia.com Email: sales@ryderinternational.com

Fit Impervia® in Kitchens, Living Rooms, Bathrooms, Bedrooms and Basements

You can fit Impervia® flooring all the way through your home or office. It is perfect for open plan living and apartments.

The other use is rental apartments as it is easy to replace single boards as well as fitting costs being less than most other floor solutions.



Because it is a simple push fit system the floor can be installed by anyone. You just need a hammer with a plastic head and a straight edge and knife. [There is a video here](#) that shows how to fit Impervia® and another one [here that shows the latest push fit system.](#)



INDUSTRY PARTNER

Ryder International Limited T/A Impervia® Flooring Reg. No 5288599 Registered Office: Unit 1 Helena Court, Hampton Street, Tetbury, Gloucestershire GL8 8JN VAT Registered No: 869 8398 36



100% WATERPROOF
Protection for everyday use



NO UNDERLAYMENT REQUIRED
Saves money & installation time



INSTALLATION ON ALL LEVELS
Including basements



CLICK INSTALLATION
Quick & easy to install



30 YEAR RESIDENTIAL
10 YEAR LIGHT COMMERCIAL
WARRANTY



Formaldehyde Free



5Gi
Licensed by Välinge



GREENGUARD
PRODUCT CERTIFIED FOR LOW CHEMICAL EMISSIONS
GREENGUARD UL 2818
GOLD



floor score
SCS Certified



Impervia® Flooring
 Unit 1 Helena Court, Hampton Street,
 Tetbury, Gloucestershire GL8 8JN and The Building Centre, London WC1E 7BT
 Tel: 01666 504015 Mobile: 07831 680206
 Web: www.impervia.com Email: sales@ryderinternational.com

Impervia® is perfect for bathrooms as it is waterproof with a low slip risk in the wet.



You could even clad your walls with **Impervia®** using an adhesive if required. With a low slip risk in the wet it will be safer than ceramic tiles.



INDUSTRY PARTNER

Ryder International Limited T/A Impervia® Flooring Reg. No 5288599 Registered Office: Unit 1 Helena Court, Hampton Street, Tetbury, Gloucestershire GL8 8JN VAT Registered No: 869 8398 36





Impervia® Flooring
 Unit 1 Helena Court, Hampton Street,
 Tetbury, Gloucestershire GL8 8JN and The Building Centre, London WC1E 7BT
 Tel: 01666 504015 Mobile: 07831 680206
 Web: www.impervia.com Email: sales@ryderinternational.com

The table below explains the benefits of using Impervia against traditional laminate flooring, vinyl and luxury Vinyl flooring. More details of each are shown further on in this document.

Impervia® Flooring

Made from Stone composite and is VOC free with no formaldehyde.

Not affected by environmental conditions. Can withstand temperatures from 60 degrees C to minus 34 degrees C.

Easy to install with the latest push fit system.

No adhesives or underlay needed. Economical to fit.

You can walk on Impervia as soon as it is laid.

Main core is a stone composite so it is:
 Waterproof and Fireproof.

Sustainable, Rigid Plank, wide boards and long with less of a repeat pattern.

IXPE backing reduces impact and sound by 75%. More like real wood to walk on.

Luxury Vinyl and Vinyl

Made from PVC which is plastic and can be detrimental to health.

Can be affected by environmental conditions. The higher the temperature the more emissions.

Normally needs impact adhesive.

Need 24 hours before you can walk on it.

Made of mainly PVC which is plastic and from fossil fuels.

Not sustainable.

Repeat pattern can be more obvious.

More expensive to fit than Impervia.

Laminate Flooring

Made of wood composites like HDF fibre board.

Affected by environmental conditions.

Uses click system but some manufacturers insist on adhesive.

It is not waterproof.

Partly sustainable depending on raw material used.

Normally shorter narrow boards where the repeat pattern is obvious.

Impact sound due to HDF or MDF core sounds "clicky".

Can be more expensive to fit than Impervia if it does not have an acoustic backing.



INDUSTRY PARTNER

Ryder International Limited T/A Impervia® Flooring Reg. No 5288599 Registered Office: Unit 1 Helena Court, Hampton Street, Tetbury, Gloucestershire GL8 8JN VAT Registered No: 869 8398 36

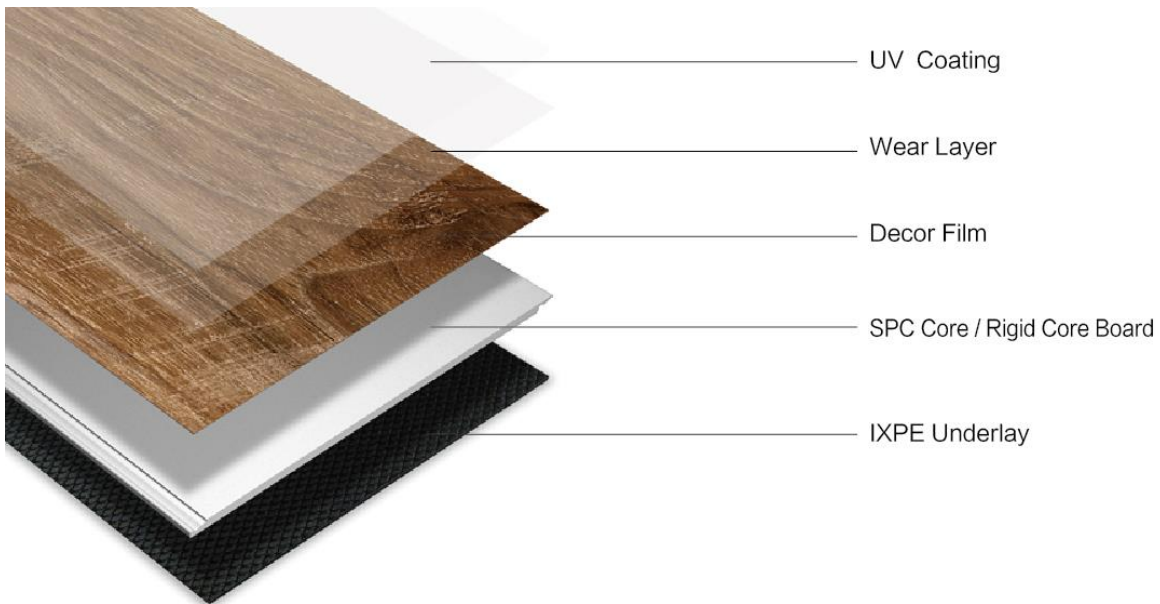




Impervia® Flooring
 Unit 1 Helena Court, Hampton Street,
 Tetbury, Gloucestershire GL8 8JN and The Building Centre, London WC1E 7BT
 Tel: 01666 504015 Mobile: 07831 680206
 Web: www.impervia.com Email: sales@ryderinternational.com

Impervia® Flooring

Impervia® flooring is a new luxury flooring product that doesn't use traditional vinyl. The construction and materials used are totally different to luxury vinyl and vinyl floors. There are no nasty plastics in the construction and the centre core is made up of fully recyclable material. The image of the structure below shows the make-up of this innovative product.



IXPE foam: short for radiation cross-linked polyethylene foam material. **IXPE** foam is **made** of high-energy electron-induced polyethylene cross-linking. It is **safe** and odourless, easy for machining and casting, and can be mixed with many other materials. It has a wide developing area as a new **environmentally-safe** material.

The Impervia® floor boards are 228mm wide and 1534mm long making it super easy to lay. Plus, the complexity of repeat patterns is minimised compared to vinyl and Laminate flooring.



INDUSTRY PARTNER

Ryder International Limited T/A Impervia® Flooring Reg. No 5288599 Registered Office: Unit 1 Helena Court, Hampton Street, Tetbury, Gloucestershire GL8 8JN VAT Registered No: 869 8398 36





Impervia® Flooring
Unit 1 Helena Court, Hampton Street,
Tetbury, Gloucestershire GL8 8JN and The Building Centre, London WC1E 7BT
Tel: 01666 504015 Mobile: 07831 680206
Web: www.impervia.com Email: sales@ryderinternational.com

Impervia® Flooring – the commercial grade heavy duty, water and stain resistant rigid floorboard.

Featuring the renowned push-fit Valinge 5G I system, with a textured wood-effect surface, built in acoustic dampening IXPE backing. Suitable for use with under floor heating. Warm and soft to walk on, this luxury rigid flooring will enhance interior décor. The nearest product finish to real wood without the worry of humidity or water damage during use. **If you are considering Amtico or Karndean make sure you ask for an Impervia® sample as well.**

Benefits:

1. European Oak brushed and textured finish.
2. Mineral based core made up of magnesium oxide (MGO core) reinforced with tough fibreglass for stability and durability means it is fireproof, as magnesium oxide is used in furnace linings and crucibles.
3. Waterproof. Dent Proof. Movement Resistant and Mould Proof.
4. Environmentally sustainable.
5. Waterproof IXPE backing, therefore no underlay required.

The Impervia® MGO core is made of 100% minerals common to the construction industry and is recognised as safe, stable and resistant to fire, water mould and denting. There is no need for transition gaps (expansion) for areas up to 30 metres x 30 meters.

Specific Benefits:

1. **Water Resistant:** the rigid core helps to prevent warping when exposed to moisture, this means you can install in virtually any conditions, especially bathrooms and basements.
2. **Fire Resistance:** the stone composite rigid core is fire resistant.
3. **Durability:** good at resisting damage from impacts like high heels and heavy objects.
4. **Stability:** the high density stone core makes this flooring more resistant to expanding and contracting than other floors:



INDUSTRY PARTNER

Ryder International Limited T/A Impervia® Flooring Reg. No 5288599 Registered Office: Unit 1 Helena Court, Hampton Street, Tetbury, Gloucestershire GL8 8JN VAT Registered No: 869 8398 36



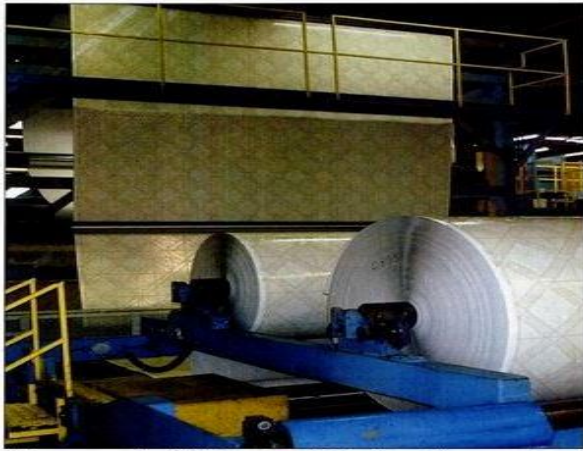


Impervia® Flooring
Unit 1 Helena Court, Hampton Street,
Tetbury, Gloucestershire GL8 8JN and The Building Centre, London WC1E 7BT
Tel: 01666 504015 Mobile: 07831 680206
Web: www.impervia.com Email: sales@ryderinternational.com

5. **Easy Installation:** The Valinge 5Gi push fit system makes the Impervia floor a DIY solution, and with the IXPE backing it means you can install directly over most existing floors, such as old wood, stone and ceramic tiles etc., as long as it is sound and perfectly flat.
6. **Price:** Impervia® floorboards are cheaper than real wood and softer to walk on.

Vinyl and Luxury Vinyl Floors

Modern vinyl floor tiles and sheet flooring and versions of those products sold since the early 1980s are **composed** of coloured polyvinyl chloride (PVC) chips formed into solid sheets of varying thicknesses by roller, heat and pressure. **PVC** releases carcinogens that endanger those who use it. Dioxin is a super-toxic chemical released when plastic that contains chlorine is burned. Aside from cancer, Dioxin can also trigger nervous system disorders and birth defects. Phthalates are carcinogenic chemicals often used in plastics to make them flexible.



There are different methods of making luxury vinyl flooring all of which use PVC.

Impervia® flooring does not use PVC in its construction. Because of this we hold a Greenguard GOLD certification. Our floors are also sustainable with a high rated floor score and **formaldehyde free**.

PVC releases carcinogens that endanger those who use it. This is a brief extract from the mother earth web site:
<https://www.motherearthnews.com/green-homes/the-vinyl-debate>



INDUSTRY PARTNER

Ryder International Limited T/A Impervia® Flooring Reg. No 5288599 Registered Office: Unit 1 Helena Court, Hampton Street, Tetbury, Gloucestershire GL8 8JN VAT Registered No: 869 8398 36





Impervia® Flooring
 Unit 1 Helena Court, Hampton Street,
 Tetbury, Gloucestershire GL8 8JN and The Building Centre, London WC1E 7BT
 Tel: 01666 504015 Mobile: 07831 680206
 Web: www.impervia.com Email: sales@ryderinternational.com

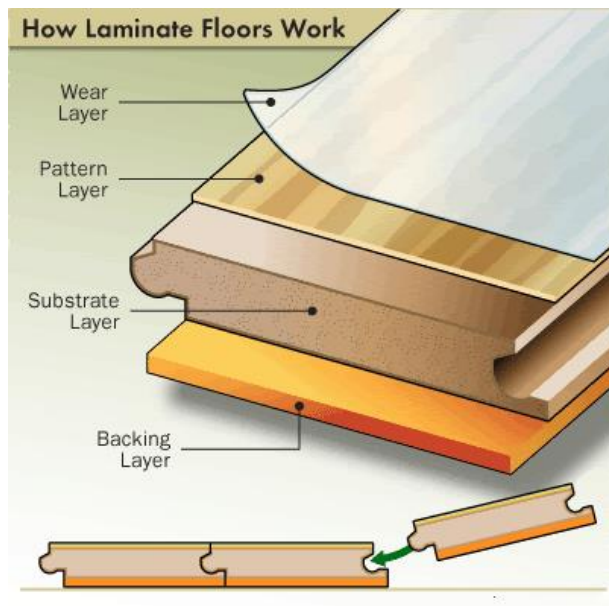
The anti-vinyl case:

PVC contains harmful carcinogens, most notably VCM. Other chemicals such as dioxin and phthalates, both carcinogenic, may also be released into an indoor environment, endangering the people who work and live in buildings that use PVC. Dioxin is a super-toxic chemical released when plastic that contains chlorine is burned. Aside from cancer, Dioxin can also trigger nervous system disorders and birth defects. Phthalates are carcinogenic chemicals often used in plastics to make them flexible. While the fact that vinyl contains carcinogens should be reason enough to avoid it, PVC is increasingly dangerous when burned. Therefore, house and building fires involving PVC are dangerous not only for homeowners and workers, but for firefighters and rescue workers as well.

Laminate Flooring:

The substrate of laminate flooring is normally a fibre board like fibre even MDF in the cheaper version.

Some laminates have a backing layer, others do not. They are affected in the same way as real wood, by moisture and humidity and will expand and contract. Water will affect the substrate layer so they should not be used in bathrooms or wet areas. This really is the cheapest floor and unless you buy the best it is unlikely to last.



INDUSTRY PARTNER

Ryder International Limited T/A Impervia® Flooring Reg. No 5288599 Registered Office: Unit 1 Helena Court, Hampton Street, Tetbury, Gloucestershire GL8 8JN VAT Registered No: 869 8398 36





Impervia® Flooring
Unit 1 Helena Court, Hampton Street,
Tetbury, Gloucestershire GL8 8JN and The Building Centre, London WC1E 7BT
Tel: 01666 504015 Mobile: 07831 680206
Web: www.impervia.com Email: sales@ryderinternational.com

The Future is here

Impervia® Flooring is the future because of its suitability for Office, Commercial applications and Residential developments. With a 30 year residential warranty and the ability to easily replace boards it is the perfect choice.

The information in this document is based on generic research and experience of flooring over the last 25 years. Some has been extracted from the internet and sites that had relevant information. We do not accept responsibility for any statements made on flooring that we do not manufacture and supply.

Impervia® Flooring are confident in their product as the next generation flooring solution for interior designers, architects and contractors serious about giving their clients a future proof flooring solution.

Please contact us today to order free trade samples, discuss requirements or submit specification requirements. Our team will be happy to help with any questions.

Call 01666 504015 or email info@thesolidwoodflooringcompany.com

See the web site here for full details and all the test reports.

<https://www.thesolidwoodflooringcompany.com/collections/luxury-vinyl-floors>



INDUSTRY PARTNER

Ryder International Limited T/A Impervia® Flooring Reg. No 5288599 Registered Office: Unit 1 Helena Court, Hampton Street, Tetbury, Gloucestershire GL8 8JN VAT Registered No: 869 8398 36

