

Provided that our Storage Maintenance and Fitting Instructions are followed at all times the product has the following specifications:



IMP- PT-9113 DK

Marbled Dark Grey Porcelain Tile

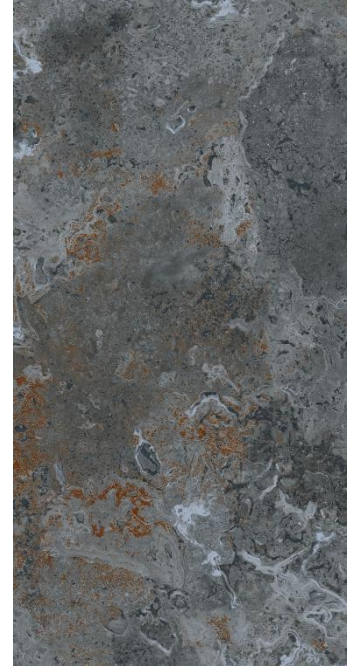
Sustainability:

Impervia Porcelain tiles feature a Lead and Cadmium free glaze. They are naturally formaldehyde and VOC free. They suitable for use in domestic and commercial environments as a wall or floor tile in conjunction with under floor heating.

It uses fewer natural resources and is significantly more stable than natural stone.

Further features are noted below:

- Free from Lead
 - Free from VOCs
 - Free from Cadmium
 - Free from Formaldehyde
 - Constructed from natural materials
-



Product Details:

Type:	Impervia Porcelain Tiles
Construction:	Glazed Porcelain Tiles
Dimensions:	9mm thick x 300mm wide x 600mm long
Finish:	Glazed, Matte
Surface Texture:	Smooth
Profile:	Square
Pattern:	Fixed Sized Tile (wall or floor)
Edge Profile:	Square
Grade:	First Grade (high quality surface, free from defects)
Impact Resistance:	0.58 (tested to ISO 10545 – 5)
Durability:	Waterproof, stain resistant, commercial grade scratch resistance
Underfloor Heating:	This floor is suitable for underfloor heating
Packaging:	Recyclable cardboard cartons. Each pack contains x6 tiles totalling 1.08m ²
Weight:	Each pack weighs 21kgs

NBS:

Uniclass:	Pr_35_93_96_19
CAWS:	M40/110 Tiling to Architecture M40/5 Tiling to Small Works

Aesthetics, Characteristics & Samples:

Porcelain tiles mimic real stone or Marble flooring. It will have inherent characteristics such as shade variation, grain patterns etc. It is the art (and responsibility) of the fitter to re-manufacture the tile materials to create a finished floor.

Small samples will give a representative example of the colour of the finished look. However, the intended variation will make every individual tile unique and one small sample **WILL NOT** be representative of the overall effect of a tiled area.

Product Performance:

Impervia Porcelain tiles are rigorously tested for conformity and quality. Our porcelain tiles comply with ISO 13006: 2018 Group BI and have been tested to ISO 10545. Please see the independent test results below:

Item	Test Method	Requirement	Result
Size (Length) (Width) (Thickness)	ISO 10545 – 2	+/- 1mm	(Avg.) 0.15mm (Avg.) 0.08mm (Avg.) 0.03mm
Straightness & Rectangularity	ISO 10545 – 2	+/- 0.8mm	(Avg.) 0.1mm
Surface flatness a. Centre Curvature b. Edge Curvature c. Warpage	ISO 10545 – 2	+/- 1.8mm	(Avg.) 0.17mm (Avg.) 0.17mm (Avg.) 0.16mm
Surface Quality	ISO 10545 – 2	95%	100% Defect Free
Water Absorption	ISO 10545 – 3	<0.5%	(Avg.) 0.05%
Breaking Strength	ISO 10545 – 4	Min. 1300N	(Avg.) 2095.85N
Modulus of Rupture	ISO 10545 – 4	Min. 35N/mn	(Avg.) 43.56N/mn
Resistance to Surface Abrasion	ISO 10545 – 7	N/A	PEI Class – IV 2100 Revolution pass
Thermal Expansion (to 100°C)	ISO 10545 – 8	9x10—6 Max.	5.07x10—6
Thermal Shock Resistance (15-145°C)	ISO 10545 – 9	10 Cycle Min.	Confirm
Crazing Resistance (x2 one-hour cycles, steam pressure of 750+/-20kpa)	ISO 10545 – 11	No Crazing in Two Cycles	Confirm
Moisture Expansion	ISO 10545 – 10	0.02mm/m Max.	0.00mm/m Max.
Impact Resistance (COR)	ISO 10545 – 5	0.55 Min.	0.58
Surface Scratch Hardness	ISO 13630 – 13	5 moh's	5 moh's
Bulk Density	ISO 10545 – 3	2.2 g/cc Min.	2.2693 g/cc
Stain Resistance a. Light Oil (Fe2O3) b. Iodine in Alcohol 13g/l c. Olive Oil	ISO 10545 – 14	Min. Class – 3	a. Class – 5 b. Class – 4 c. Class – 5
Resistance to Low Concentration of Acid & Alkali a. Hydrochloric acid (3%) b. Citric Acid (100gm/l) c. Potassium Hydroxide (30gm/l)	ISO 10545 – 13	Min. Class – GLC	Class – GLA (Pass)
Resistance to High Concentration of Acid & Alkali a. Hydrochloric Acid (18%) b. Lactic Acid (5%) c. Potassium Hydroxide (100gm/l)	ISO 10545 – 13	Min. Class – GHC	Class – GHA (Pass)
Household Chemical Resistance a. Ammonium Chloride (100gm/l) b. Sodium Hypochlorite (20mg/l) (Swimming pool salt)	ISO 10545 – 13	Min. Class – GC	Class – GA (Pass)
Emissions a. Lead Release b. Cadmium Release	ISO10545 – 15	0.1mg/dm ² Limit	0.00 mg/dm ²

Storage, Fitting & Maintenance:

Refer BS 5385 as well as our T&Cs for full details.

Storage: Porcelain tiles should be stored on end and away from hazards (i.e. impact damage). Whilst Impervia is not susceptible to moisture or heat, it is advisable to have major trades completed before bringing Impervia to site to reduce the risk of damages.

Installation Methods: Impervia Porcelain should be installed in accordance with BS 5385.

N.B. Impervia flooring should never be used as a foundation. Therefore, it is important to design any kitchen cabinets (or other heavy furnishing) with their own structural base and not to be sat on the tiles.

On-site Protection: In situations where the flooring is installed but works are to continue afterwards, please ensure the correct protection is used. We recommend using BreatherShield® topped with hardboard (taped together, but do not tape the floor). This reduces the chance of surface damage as works continue. **Do not** use rigid plastic coverings.

Cleaning: (Never use solvent cleaning product) Correct cleaning and maintenance is important. Simply clean when needed using a PH Neutral cleaner (such as Bona Cleaner) or a steam mop. Never apply an oil or wax-based product.

Health & Safety:

Impervia Luxury Plank Flooring is a manmade product and on its own offers no recognisable health and safety risks. When re-manufacturing any product please follow HSE advice.

Company Approvals:

The Solid Wood Flooring Company operate a stringent sustainable environmental policy, details of which can be seen on the web site. We are certified by all the relevant organisations and our certificate numbers can be seen below:

FSC® - The Solid Wood Flooring Chain of Custody Number: INT-COC-003944-545

PEFC™ - The Solid Wood Flooring Chain of Custody Number: INT-PEFC-COC-1119-545

WWF® - The Solid Wood Flooring Company achieved the highest - 3 Trees - accreditation