



Click and climb

Let your floor climb the wall

5G Climb® is an intuitive technology that makes creating beautiful accent walls really easy. Simply use your floorboards as wall panels and support rails and secure your floating installation with our unique, user-friendly 5G Climb clips. This versatile solution allows panels to be used horizontally, vertically, at an angle or even in a herringbone pattern – all depending on taste and preferences. Installation is simple and dismantling is easily done without damaging the panels to ensure they can be reused elsewhere.



<< New and improved!

One 5G Climb clip handles decorative panels in multiple thicknesses and it's compatible with 5G Dry for leakproof seams.

2-in-1

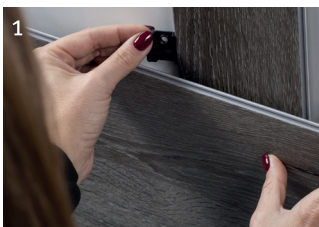
Use your floorboards to create a stunning accent wall.

Versatile

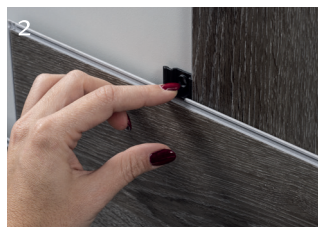
Enables multiple pattern installation and fits all materials.

User-friendly

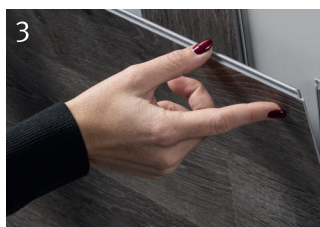
The clips easily secure floor panels and support rails.



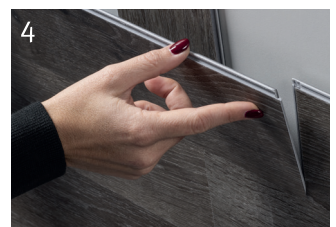
1 Angle the clip in the stud.



2 Drag along the stud to lock the panel.



3 Fold in the next panel.



4 Continue up the wall.



5G Climb® is a patented technology invented by Välinge Innovation AB. The 5G Climb word mark and logo are trademarks owned by Välinge Innovation AB and any use of such marks is under license. 5G Climb is registered in inter alia European Union. Please contact Välinge for further information about trademark registration in other countries.

